



CAM
PIO
NARI
O

REV. 2015

FABRICS

LEATHER

ECO
LEATHER

PER I NOSTRI PRODOTTI SCEGLIAMO CON CURA OGNI MATERIALE CHE LI COMPONE,
ANCHE PER QUESTO SONO UNICI ED ESCLUSIVI.

WE CHOOSE CAREFULLY EVERY MATERIAL THAT COMPOSES OUR PRODUCTS.
EVEN FOR THIS THEY ARE UNIQUE AND EXCLUSIVE.



Velluto FR



SUPER FR



SUPER FR_01



SUPER FR_02



SUPER FR_03



SUPER FR_04



SUPER FR_05



SUPER FR_06



SUPER FR_07



SUPER FR_08



SUPER FR_09



SUPER FR_10



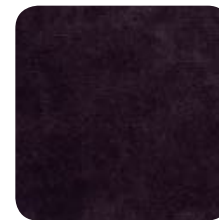
SUPER FR_11



SUPER FR_12



SUPER FR_13



SUPER FR_14



SUPER FR_15



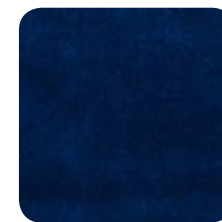
SUPER FR_16



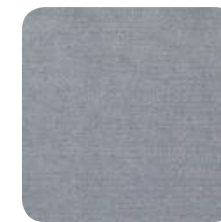
SUPER FR_17



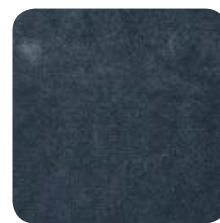
SUPER FR_18



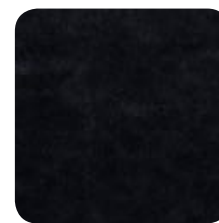
SUPER FR_19



SUPER FR_20



SUPER FR_21



SUPER FR_22

PRODOTTO product	COMPOSIZIONE composition	ALTEZZA width	RESISTENZA AL FUOCO fire resistance
SUPER_FR	100% PL	140cm	IGNIFUGO CLASSE 1



SUPER FR_03

•
Poltroncina America



Classic



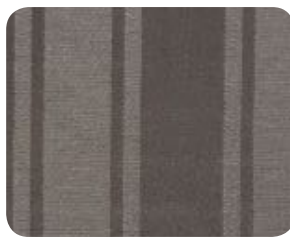
CLASSIC



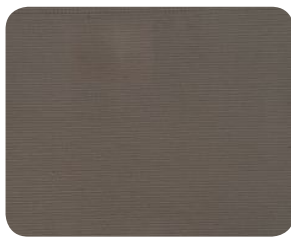
M1472_3



M1473_3



M1474_3



M1475_3



M1481_3



M1472_2



M1473_2



M1474_2



M1475_2



M1481_2



M1472_1



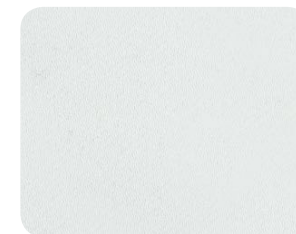
M1473_1



M1474_1



M1475_1



M1481_1

PRODOTTO product	COMPOSIZIONE composition	ALTEZZA width	RESISTENZA AL FUOCO fire resistance
M1472	24%VI-76%PL_TRAMA 37 ORDITO 70	140cm	NO
M1473	54%CO-46%PL_TRAMA 36 ORDITO 76	140cm	NO
M1474	54%CO-46%PL	140cm	NO
M1475	54%CO-46%PL	140cm	NO
M1481	54%CO-46%PL	140cm	NO



M1472_7



M1473_7



M1474_7



M1475_7



M1481_7



M1472_8



M1473_8



M1474_8



M1475_8



M1481_8



M1472_6



M1473_6



M1474_6



M1475_6



M1481_6



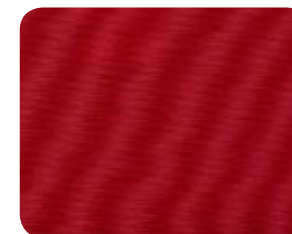
M1472_5



M1473_5



M1474_5



M1475_5



M1481_5

PRODOTTO product	COMPOSIZIONE composition	ALTEZZA width	RESISTENZA AL FUOCO fire resistance
M1472	24%VI-76%PL_TRAMA 37 ORDITO 70	140cm	NO
M1473	54%CO-46%PL_TRAMA 36 ORDITO 76	140cm	NO
M1474	54%CO-46%PL	140cm	NO
M1475	54%CO-46%PL	140cm	NO
M1481	54%CO-46%PL	140cm	NO

PRODOTTO product	COMPOSIZIONE composition	ALTEZZA width	RESISTENZA AL FUOCO fire resistance
M1472	24%VI-76%PL_TRAMA 37 ORDITO 70	140cm	NO
M1473	54%CO-46%PL_TRAMA 36 ORDITO 76	140cm	NO
M1474	54%CO-46%PL	140cm	NO
M1475	54%CO-46%PL	140cm	NO
M1481	54%CO-46%PL	140cm	NO



M1472_4



M1473_4



M1474_4



M1475_4



M1481_4



M1472_2

Sedia Carlà

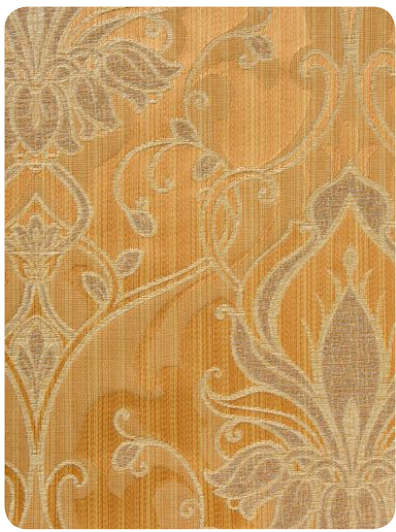
PRODOTTO product	COMPOSIZIONE composition	ALTEZZA width	RESISTENZA AL FUOCO fire resistance
M1472	24%VI-76%PL_TRAMA 37 ORDITO 70	140cm	NO
M1473	54%CO-46%PL_TRAMA 36 ORDITO 76	140cm	NO
M1474	54%CO-46%PL	140cm	NO
M1475	54%CO-46%PL	140cm	NO
M1481	54%CO-46%PL	140cm	NO



Superga



SUPERGA



M1385_3



M1386_3



M1387_3



M1388_3



M1385_4



M1386_4



M1387_4



M1388_4



M1385_2



M1386_2



M1387_2



M1388_2

PRODOTTO product	COMPOSIZIONE composition	ALTEZZA width	RESISTENZA AL FUOCO fire resistance
M1385	42%PL-29%CO-29%ACR	280cm	NO
M1386	42%PL-29%CO-29%ACR	280cm	NO
M1387	42%PL-29%CO-29%ACR	280cm	NO
M1388	40%PL-60%CO	280cm	NO



M1385_1



M1386_1



M1387_1



M1388_1



M1385_5



M1386_5



M1387_5



M1388_5



M1385_8



M1386_8



M1387_8



M1388_8



M1385_6



M1386_6



M1387_6



M1388_6

PRODOTTO product	COMPOSIZIONE composition	ALTEZZA width	RESISTENZA AL FUOCO fire resistance
M1385	42%PL-29%CO-29%ACR	280cm	NO
M1386	42%PL-29%CO-29%ACR	280cm	NO
M1387	42%PL-29%CO-29%ACR	280cm	NO
M1388	40%PL-60%CO	280cm	NO

PRODOTTO product	COMPOSIZIONE composition	ALTEZZA width	RESISTENZA AL FUOCO fire resistance
M1385	42%PL-29%CO-29%ACR	280cm	NO
M1386	42%PL-29%CO-29%ACR	280cm	NO
M1387	42%PL-29%CO-29%ACR	280cm	NO
M1388	40%PL-60%CO	280cm	NO

Damasco



INCA TECNO DAMASCO



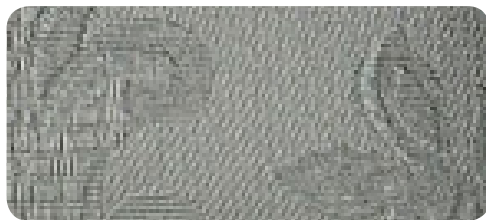
DAMASCO_BIANCO



DAMASCO_PEARL



DAMASCO_D994



DAMASCO_D995



DAMASCO_D834



DAMASCO_PLATINO



DAMASCO_DARK



DAMASCO_GOLD



DAMASCO_D992



DAMASCO_NERO

PRODOTTO product	COMPOSIZIONE composition	ALTEZZA width	RESISTENZA AL FUOCO fire resistance
INCA TECNO DAMASCO	2%PU-85%PVC-9%PES-4%CO	140cm	IGNIFUGO CLASSE 1

ECO
Leather Bufalino



BUFALINO



B-BCS



B-BCO



B-005



B-014



B-019



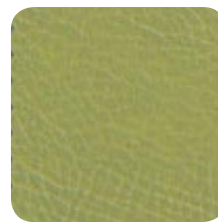
B-017



B-SILVER



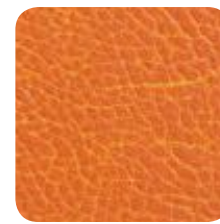
B-GOLD



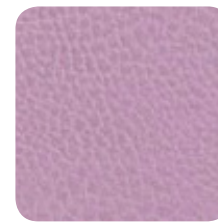
B-023



B-029



B-030



B-037



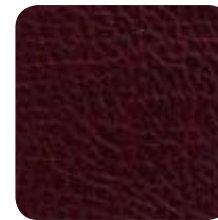
B-038



B-039



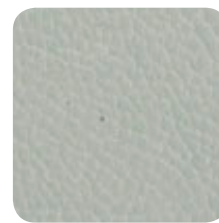
B-007



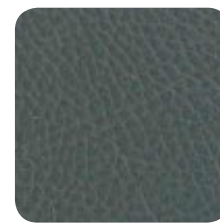
B-004



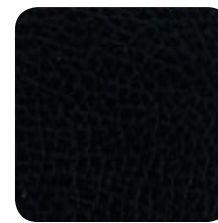
B-033



B-08



B-010



B-NRO

PRODOTTO product	COMPOSIZIONE composition	ALTEZZA width	RESISTENZA AL FUOCO fire resistance
ECOPELLE BUFALINO	59%PVC-27%CO-13%PL-1%PU	140cm	IGNIFUGO CLASSE 1



N-NRO

•
Sedia Karina



ECO
Leather Nappa



NAPPA



N-BCS



N-BCO



N-005



N-014



N-019



N-017



N-SILVER



N-GOLD



N-023



N-029



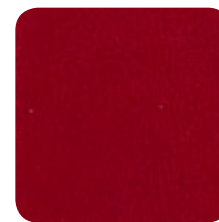
N-030



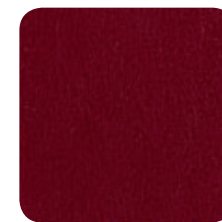
N-037



N-038



N-039



N-007



N-004



N-033



N-08



N-010



N-NRO

PRODOTTO
product

COMPOSIZIONE
composition

ALTEZZA
width

RESISTENZA AL FUOCO
fire resistance

ECOPELLE
NAPPA

59%PVC-27%CO-13%PL-1%PU

140cm

IGNIFUGO CLASSE 1



N-NRO

•
Poltrona Alma



GENUINE
Leather BULGARO & SIVIGLIA



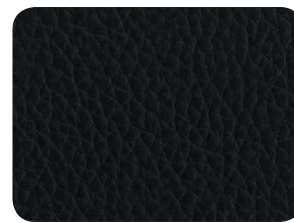
BULGARO VERDE



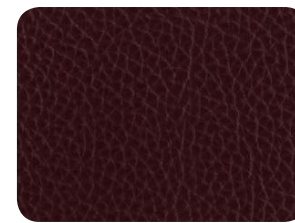
GREEN



BLUE



BLACK



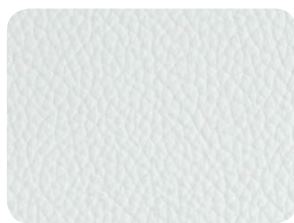
BORDEAUX



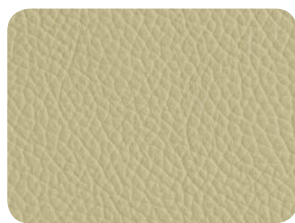
RED



BULGARO - SIVIGLIA



WHITE



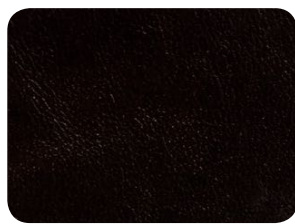
CREAM



ICE



BULGARO MARRONE



TESTA DI MORO



NOCCIOLA

PRODOTTO product	TIPO PELLAME composition	SPESSORE thickness	TAGLIA MEDIA average size	SUPERFICIE surface
PELLAME	BOVINO	mm. 1,0-1,1	> Mq. 4,5	FIORE CORRETTO E STAMPATO



WHITE

•
Poltrona Kole





PQ1036_2



PQ1035_2



PQ1037_2



PQ1036_4



PQ1035_4



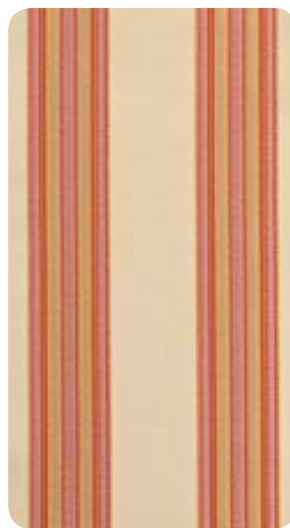
PQ1037_4



PQ1036_3



PQ1035_3



PQ1037_3



VERSAILLE



PRODOTTO product	COMPOSIZIONE composition	ALTEZZA width	RESISTENZA AL FUOCO fire resistance
PQ1035	100% PL	140cm	NO
PQ1036	100% PL	140cm	NO
PQ1037	100% PL	140cm	NO



PQ1036_6



PQ1035_6



PQ1037_6



PQ1036_4

Sedia Michy



PQ1036_1



PQ1035_1



PQ1037_1



PRODOTTO product	COMPOSIZIONE composition	ALTEZZA width	RESISTENZA AL FUOCO fire resistance
PQ1035	100% PL	140cm	NO
PQ1036	100% PL	140cm	NO
PQ1037	100% PL	140cm	NO

Belle Époque



BELLE EPOQUE



04_IRON



03_IRON



02_IRON



UNITO_IRON



04_PORFIDO



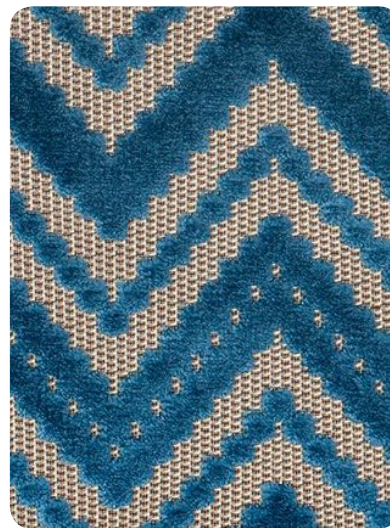
03_PORFIDO



02_PORFIDO



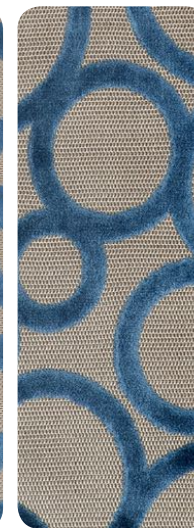
UNITO_PORF.



04_CAPE BLU



03_CAPE BLU

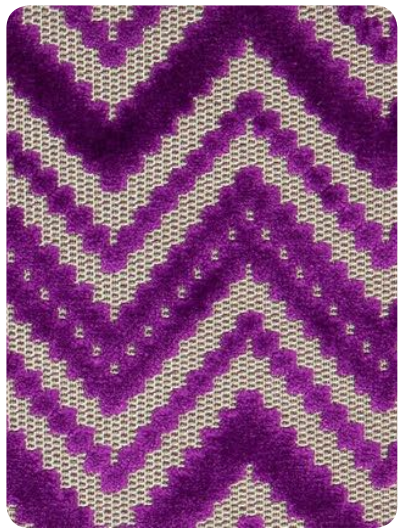


02_CAPE BLU



UNITO_C. BLU

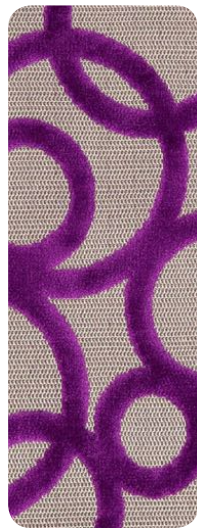
PRODOTTO product	COMPOSIZIONE composition	ALTEZZA width	RESISTENZA AL FUOCO fire resistance
UNITO	59%VI-24%CO-17%PL	140cm	NO
02	53%VI-47%PL	140cm	NO
03	56%VI-44%PL	140cm	NO
04	55%VI-45%PL	140cm	NO



04_CARDINALE



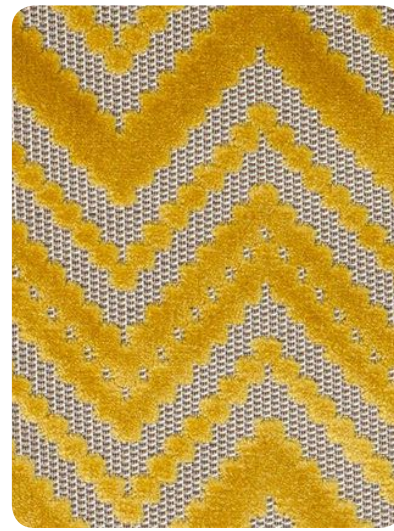
03_CARD.



02_CARD.



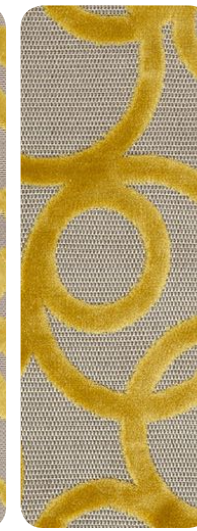
UNITO_CARD.



04_GOLD



03_GOLD



02_GOLD



UNITO_GOLD



04_FUXIA



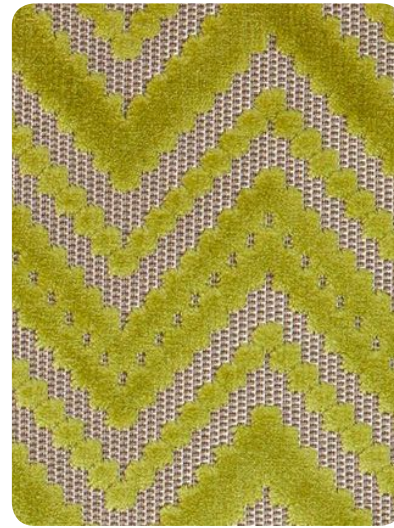
03_FUXIA



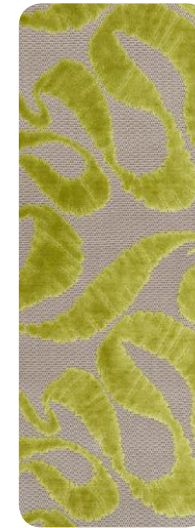
02_FUXIA



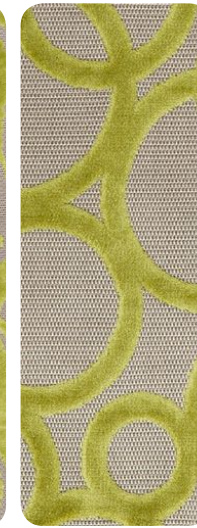
UNITO_FUXIA



04_PISELLO



03_PISELLO



02_PISELLO



UNITO_PIS.

PRODOTTO product	COMPOSIZIONE composition	ALTEZZA width	RESISTENZA AL FUOCO fire resistance
UNITO	59%VI-24%CO-17%PL	140cm	NO
02	53%VI-47%PL	140cm	NO
03	56%VI-44%PL	140cm	NO
04	55%VI-45%PL	140cm	NO

PRODOTTO product	COMPOSIZIONE composition	ALTEZZA width	RESISTENZA AL FUOCO fire resistance
UNITO	59%VI-24%CO-17%PL	140cm	NO
02	53%VI-47%PL	140cm	NO
03	56%VI-44%PL	140cm	NO
04	55%VI-45%PL	140cm	NO



02_CAPE BLU

Chaise Longue Daisy



Palladium



PALLADIUM



PQ1039_3



PQ1042_3



PQ1040_3



PQ1039_2



PQ1042_2



PQ1040_2



PQ1039_1



PQ1042_1



PQ1040_1

PRODOTTO product	COMPOSIZIONE composition	ALTEZZA width	RESISTENZA AL FUOCO fire resistance
PQ1039	100% PL	140cm	NO
PQ1040	100% PL	140cm	NO
PQ1042	100% PL	140cm	NO



PQ1039_5



PQ1042_5



PQ1040_5



PQ1042_5

Sedia Carlo Magno



PQ1039_4



PQ1042_4



PQ1040_4

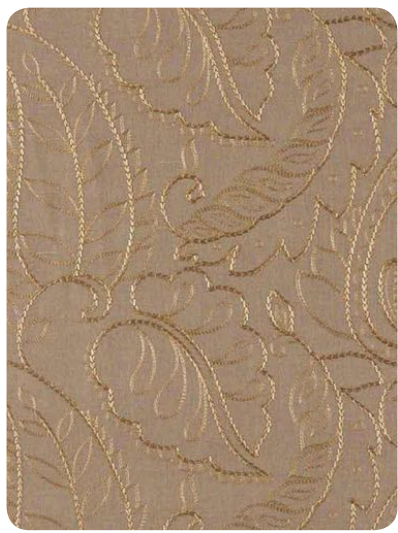


PRODOTTO product	COMPOSIZIONE composition	ALTEZZA width	RESISTENZA AL FUOCO fire resistance
PQ1039	100% PL	140cm	NO
PQ1040	100% PL	140cm	NO
PQ1042	100% PL	140cm	NO

Arles



ARLES - MADAME UNI - STUDIO



6570218



914



33360348



33360699



6570330



901/GG



33360156



33360861



6570103



23902



33361380



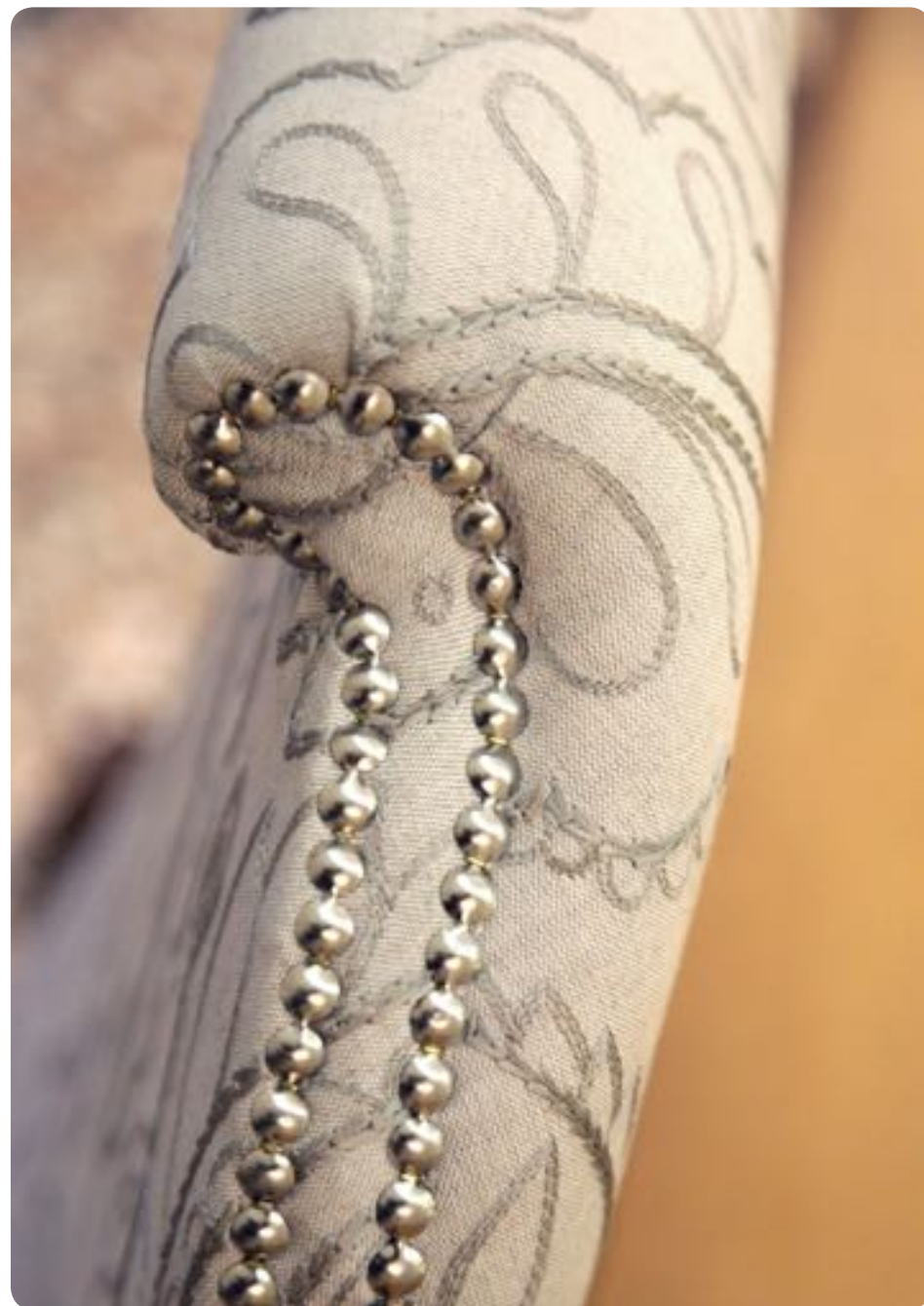
33360477

PRODOTTO product	COMPOSIZIONE composition	ALTEZZA width	RESISTENZA AL FUOCO fire resistance
Arles 6570	60%LI-40%CO-VI EMBROIDERY	132cm	NO
Madame Uni	46%PL-35%VI-17%LI-2%LX	140cm	NO
Studio 3336	34%LI-24%VI-25%PA-17%PL	140cm	NO



6570330

Sedia Alice



Arpege

> ARPEGE - ACCORD - ARTHUR'S SEAT <



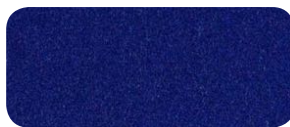
33470275



33310427



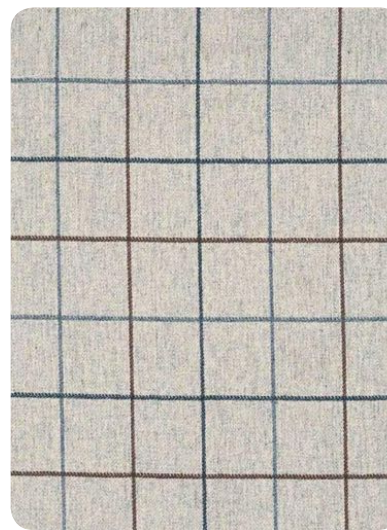
C7680348



C7684565



C7682627



33470453



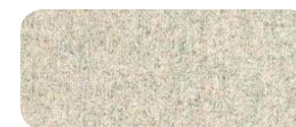
33310254



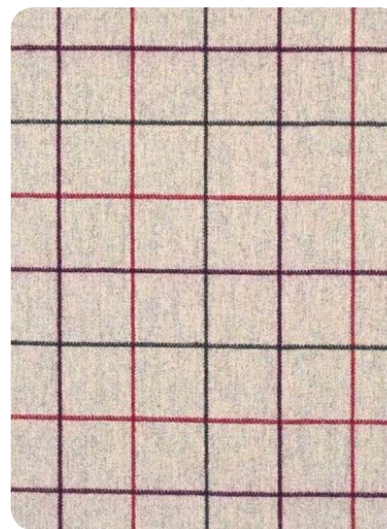
C7682729



C7683443



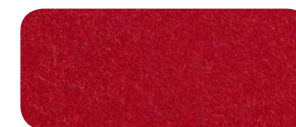
C7680129



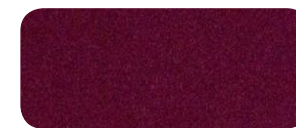
33470384



33310373



C7681519

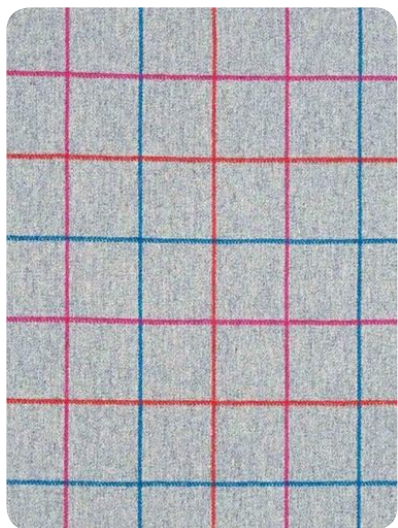


C7684055



C7680632

PRODOTTO product	COMPOSIZIONE composition	ALTEZZA width	RESISTENZA AL FUOCO fire resistance
Arpege 3347	70%WO-25%PA-5%OTHERS	140cm	NO
Accord 3331	70%WO-25%PA-5%OTHERS	140cm	NO
Arthur's. C768	70%WO-25%PA-5%OTHERS	140cm	NO



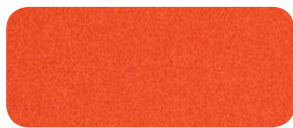
33470135



33310137



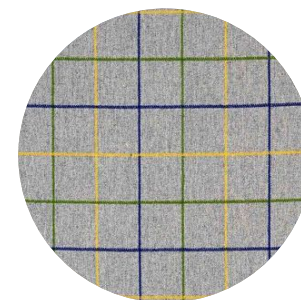
C7684769



C7683749



C7682627



3347275

Poltroncina Frida

PRODOTTO product	COMPOSIZIONE composition	ALTEZZA width	RESISTENZA AL FUOCO fire resistance
Arpege 3347	70%W0-25%PA-5%OTHERS	140cm	NO
Accord 3331	70%W0-25%PA-5%OTHERS	140cm	NO
Arthur's. C768	70%W0-25%PA-5%OTHERS	140cm	NO





veneta sedie

Pacte



33480258



7830855



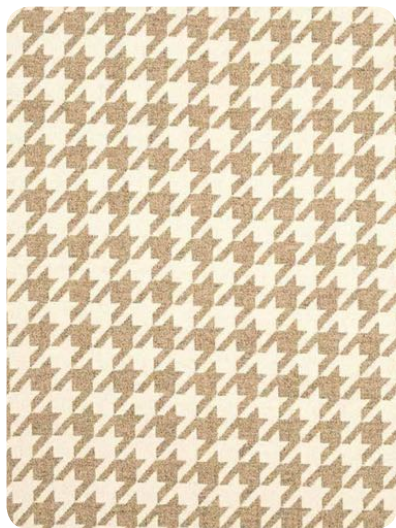
C7682729



C7680129



PACTE - CIRTA - ARTHUR'S SEAT



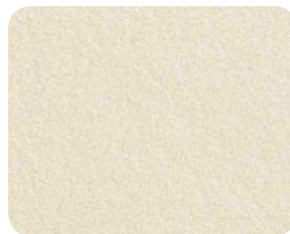
33480375



7830703



C7682334



C7682145

PRODOTTO product	COMPOSIZIONE composition	ALTEZZA width	RESISTENZA AL FUOCO fire resistance
Pacte 3348	75%WO-25%PA	140cm	NO
Cirta 783	51%LI-25%VI-24%PL	140cm	NO
Arthur's. C768	70%WO-25%PA-5%OTHERS	140cm	NO





33480375

Poltroncina Marie



Montmartre

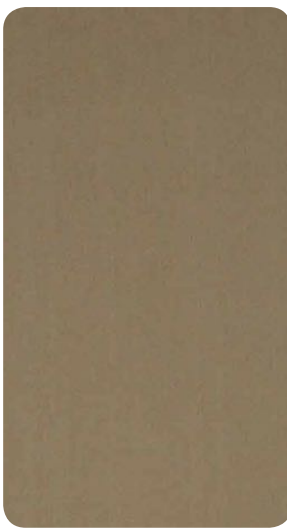
> GALLIERA - MONTMARTRE - MIXOLOGY WOOL INSPIRED <



34820331



34840151



34881120



34820433



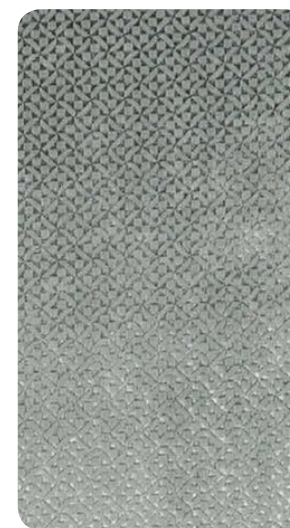
34840151



34880202



34820127



34840457



34880202

PRODOTTO product	COMPOSIZIONE composition	ALTEZZA width	RESISTENZA AL FUOCO fire resistance
Galliera 3482	60%CO-40%PL-VI EMB.-100%PL	140cm	NO
Montmartre 3484	70%PL-30%VI	140cm	NO
M.Wool I. A3488	100% PL	140cm	NO



34820127

Sedia Dalia



Demisure



DEMISURE - ICONE - OXFORD



34100324



8990722



A3171419



34100275



8990912



A3170322



34100159



8990378



A3174634

PRODOTTO product	COMPOSIZIONE composition	ALTEZZA width	RESISTENZA AL FUOCO fire resistance
Demisure 3410	59%VI-33%CO-8%PL	140cm	NO
Icone 899	51%CO-44%VI-5%PL	140cm	NO
Oxford A317	60%VI-20%CO-20%PL	140cm	NO



34100159

•
Sedia Adelaide



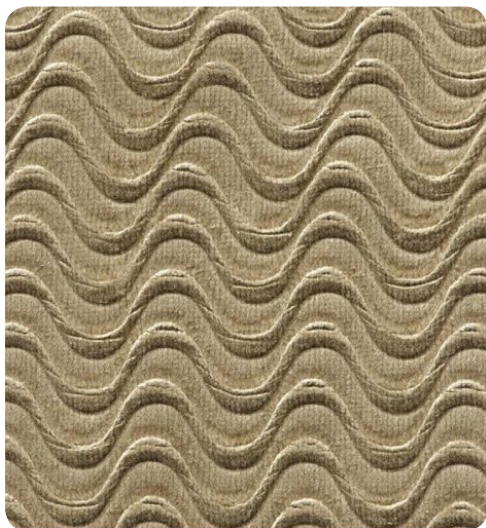


veneta sedie

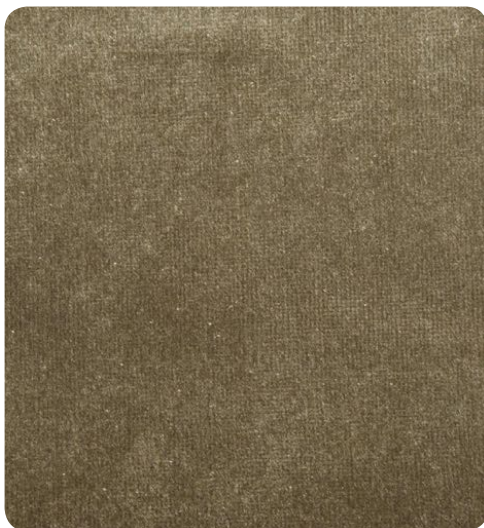
Bloom



BLOOM - OXFORD



30134008



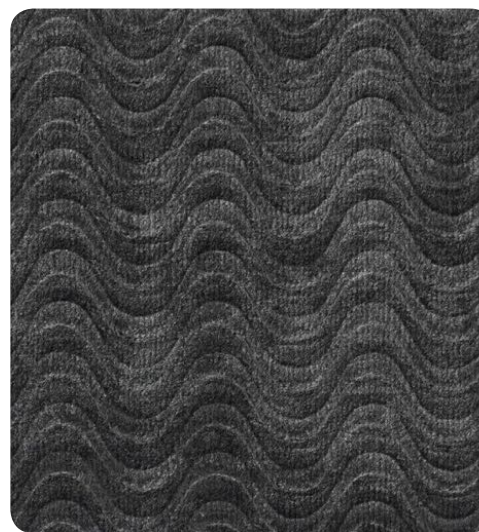
A3171419



30133006



A3174430



30136012



A3174328

PRODOTTO product	COMPOSIZIONE composition	ALTEZZA width	RESISTENZA AL FUOCO fire resistance
Bloom 3013	60%VI-20%CO-20%PL	140cm	NO
Oxford A317	60%VI-20%CO-20%PL	140cm	NO



30134008

•
Sedia Marilyn

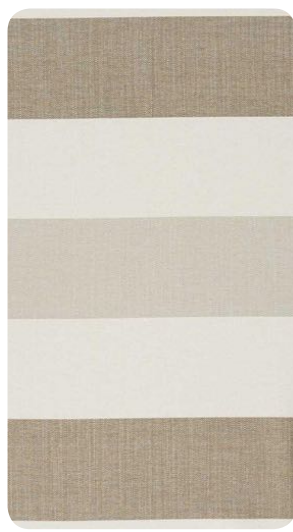


CHARLOTTE

> CHARLOTTE - OKLAHOMA - PARIS TEXAS <



31900194



31892134



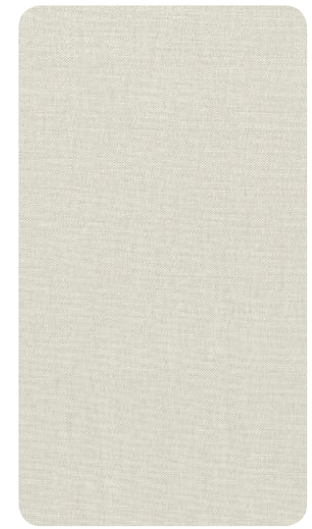
3611153



31900561



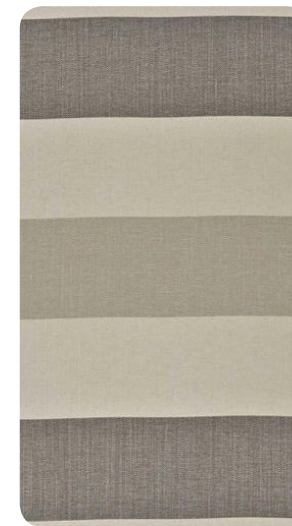
31890632



3619922



31900725



31890133



3610151

PRODOTTO product	COMPOSIZIONE composition	ALTEZZA width	RESISTENZA AL FUOCO fire resistance
Charlotte 3190	63%CO-37%LI	140cm	NO
Oklahoma 3189	63%CO-37%LI	140cm	NO
Paris T. 361	63%CO-37%LI	140cm	NO



31900400



31890952



3619875



31900400

Poltrona Marja

PRODOTTO product	COMPOSIZIONE composition	ALTEZZA width	RESISTENZA AL FUOCO fire resistance
Charlotte 3190	63%C0-37%LI	140cm	NO
Oklahoma 3189	63%C0-37%LI	140cm	NO
Paris T. 361	63%C0-37%LI	140cm	NO





veneta sedie

Martigues



MARTIGUES



7510542



7510454



7510383



7510109

PRODOTTO
product

COMPOSIZIONE
composition

ALTEZZA
width

RESISTENZA AL FUOCO
fire resistance

Martigues 751

55%CO-45%LI

140cm

NO



7510542

•
Poltrona Rosa



FOLIAGE

> FOLIAGE - PHYSALIS - PARIS TEXAS <



34750179



34760102



3611153



34750383



34760408



3611266



34750281



34760306



3611266

PRODOTTO product	COMPOSIZIONE composition	ALTEZZA width	RESISTENZA AL FUOCO fire resistance
Foliage 3475	CO-LI	140cm	NO
Physalis 3476	60%CO-40%PL-PL EMBROIDERY	140cm	NO
Paris T. 361	63%CO-37%LI	140cm	NO



34750179

•
Sedia Luigi XVI



Kuban

> KUBAN - CONSTANTINE - AUBAGNE <



8890408



7750641



34231324



8891428



7750798



34231630



8891122



7752435



34231426

PRODOTTO product	COMPOSIZIONE composition	ALTEZZA width	RESISTENZA AL FUOCO fire resistance
Kuban 889	75%VI-12%PL-8%LI-5%CO	140cm	NO
Constantine 775	10%LI-30%VI-40%CO-20%PC	140cm	NO
Aubagne 342	100%PL	140cm	NO



8890714



7751595



34231222



109803



8891632



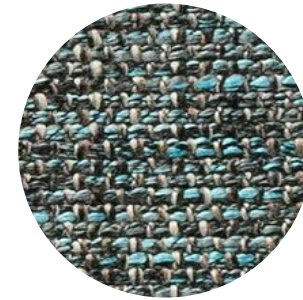
7751946



34231018



109821



109821

Sedia Elisabeth

PRODOTTO product	COMPOSIZIONE composition	ALTEZZA width	RESISTENZA AL FUOCO fire resistance
Kuban 889	75%VI-12%PL-8%LI-5%CO	140cm	NO
Constantine 775	10%LI-30%VI-40%CO-20%PC	140cm	NO
Aubagne 3423	100%PL	140cm	NO
PQ 1098	58%PC-42%PES	140cm	NO



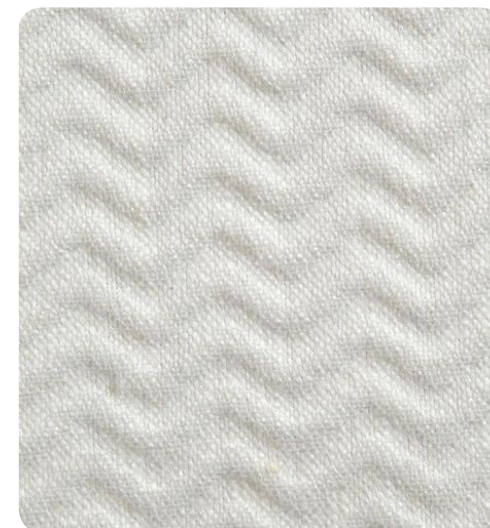
Ondulation



ONDULATION



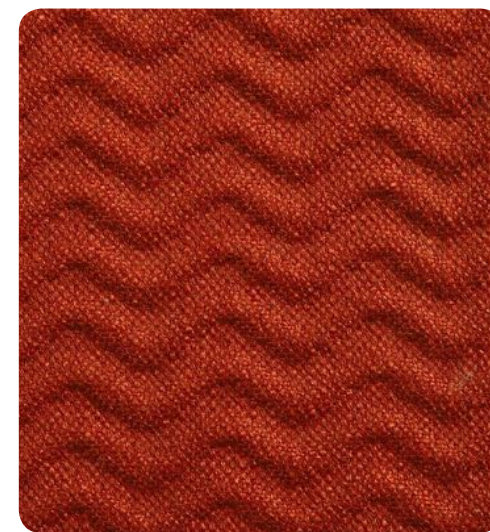
8800450



8800112



8800234



8800601



8800345



8800514

PRODOTTO product	COMPOSIZIONE composition	ALTEZZA width	RESISTENZA AL FUOCO fire resistance
Ondulation 880	36%PC-29%VI-11%PL-16%LI-8%CO	136cm	NO



8800601

•
Sedia Nea





veneta sedie

CAPUCINE



CAPUCINE



33690406



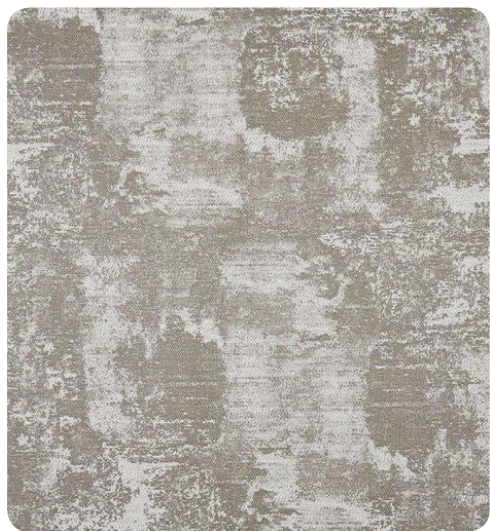
33690508



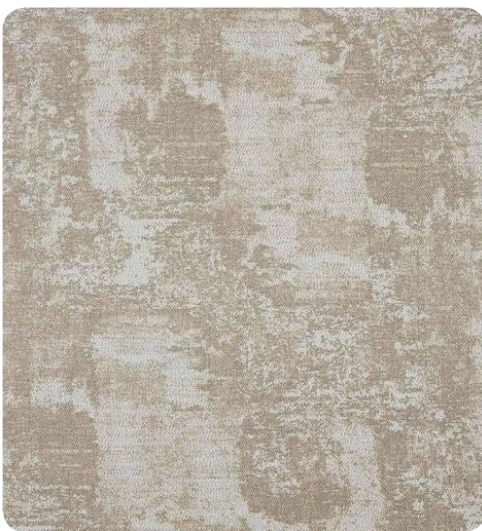
33690304



33690610



33690100



33690202

PRODOTTO product	COMPOSIZIONE composition	ALTEZZA width	RESISTENZA AL FUOCO fire resistance
Capucine 3369	61%PL-20%VI-10%CO-5%LI-3%PC-1%OTHER	144cm	NO



33690100

•
Sedia Brianzola



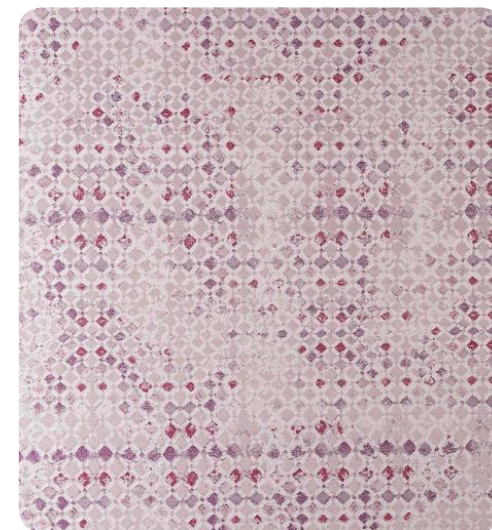


veneta sedie

Profondeur



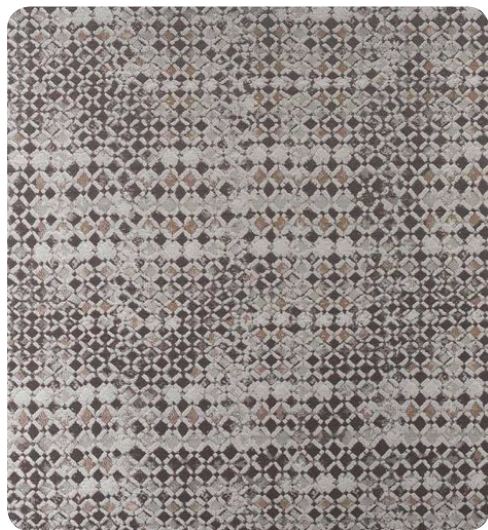
32850334



32850131



PROFONDEUR

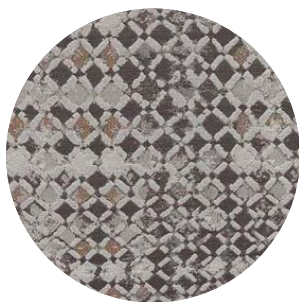


32850212



32850428

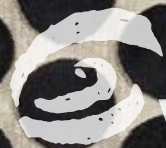
PRODOTTO product	COMPOSIZIONE composition	ALTEZZA width	RESISTENZA AL FUOCO fire resistance
Profondeur 3285	100% PL	144cm	NO



32850212

•
Sedia Kelly



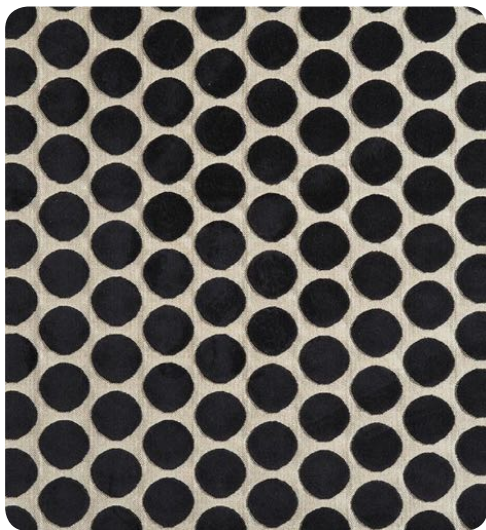


veneta sedie

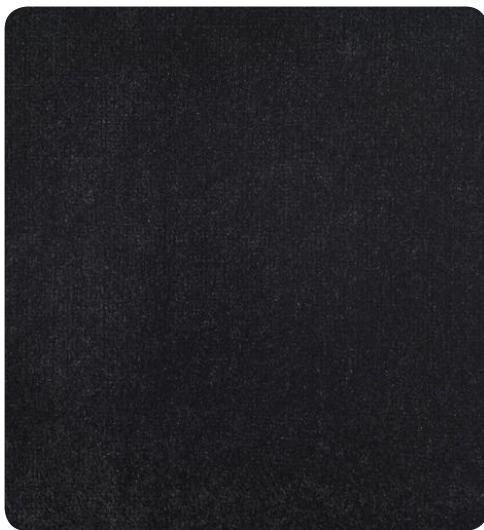
ARTISTA



ARTISTA - OXFORD - DE LACROIX



6920685



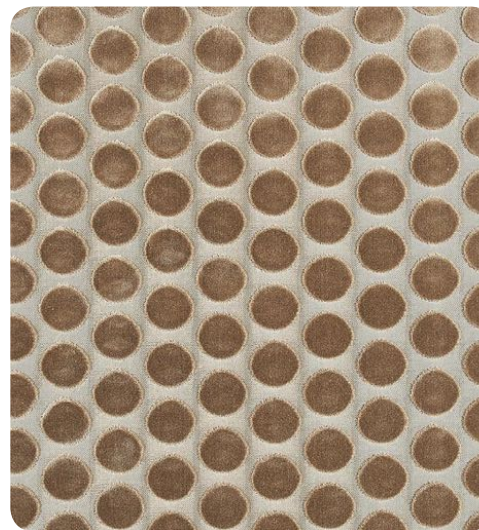
A3170701



6920531



A3171123

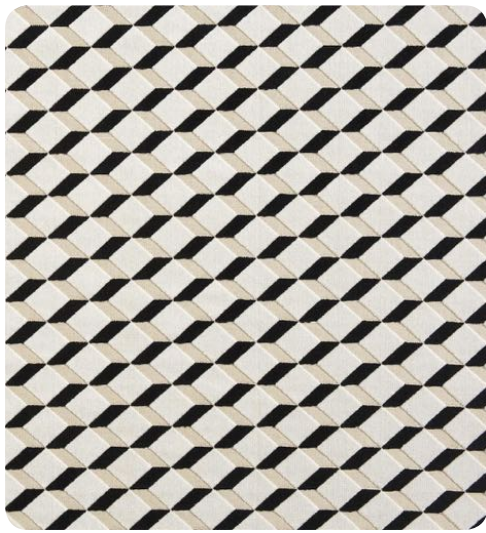


6920273



A3171377

PRODOTTO product	COMPOSIZIONE composition	ALTEZZA width	RESISTENZA AL FUOCO fire resistance
Artista 692	56%PL-44%VI	140cm	NO
Oxford A317	60%VI-20%CO-20%PL	140cm	NO



7710354



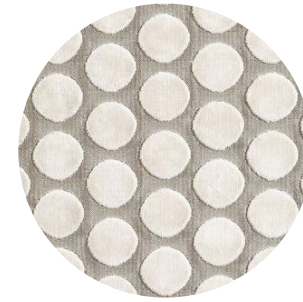
A3170701



7710185



A3171123



6920531

Sgabello Luigi XVI

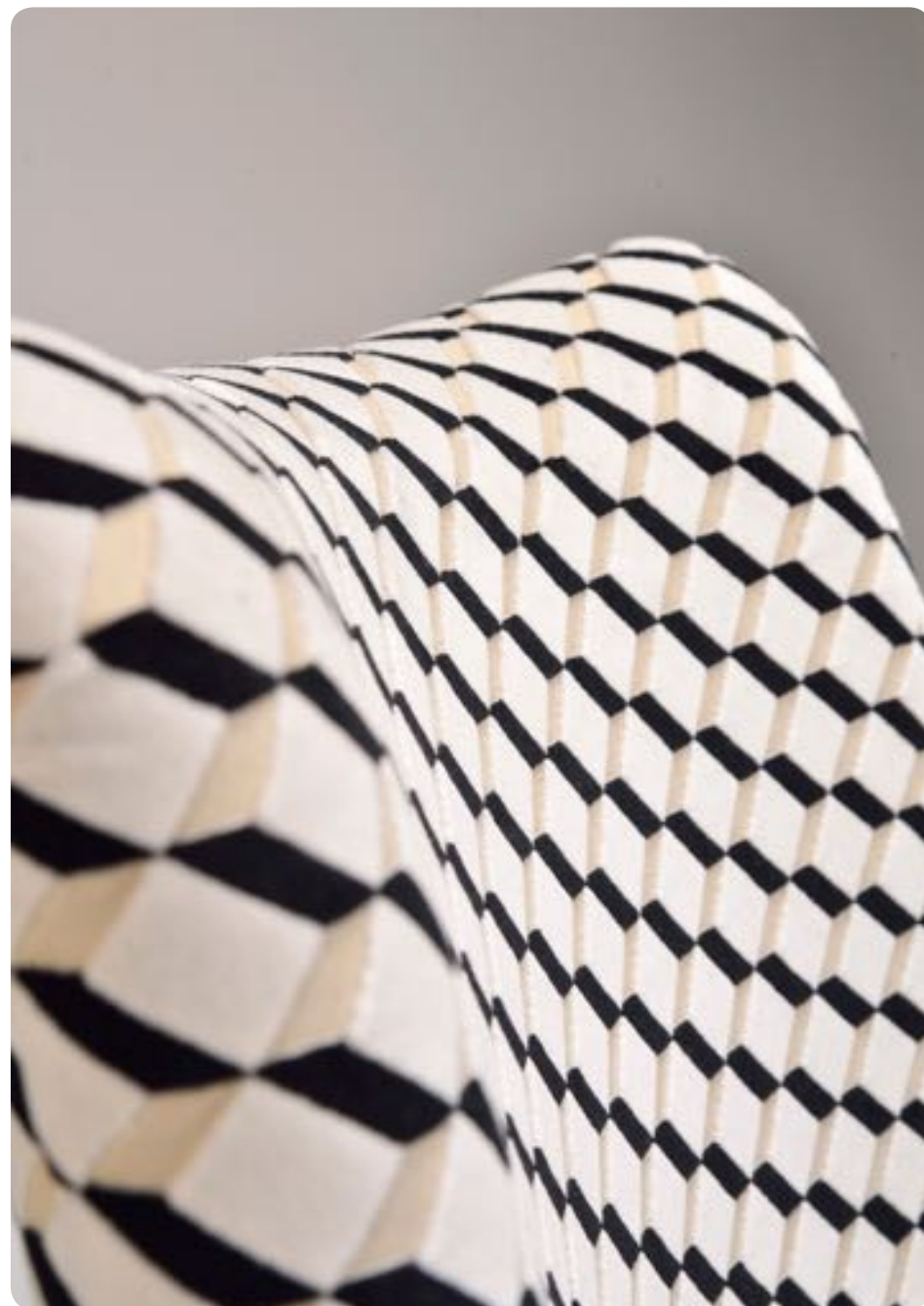
PRODOTTO product	COMPOSIZIONE composition	ALTEZZA width	RESISTENZA AL FUOCO fire resistance
De Lacroix 771	80%VI-20%PL	140cm	NO
Oxford A317	60%VI-20%CO-20%PL	140cm	NO





7710354

Poltroncina Gardenia



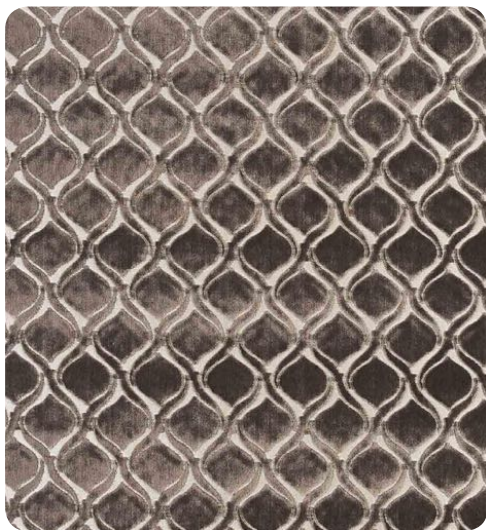


veneta sedie

Kipling



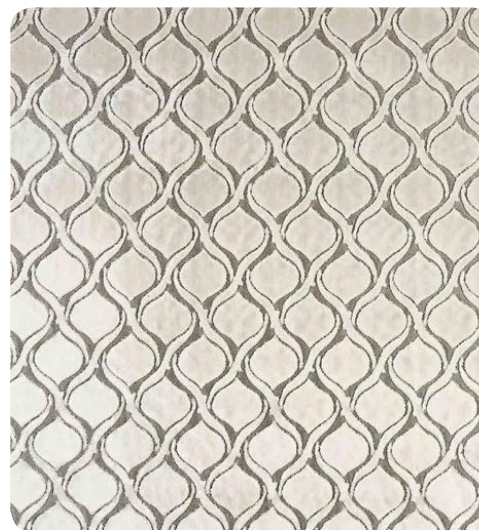
KIPLING - OXFORD - BAIGNEUSES



7820494



A3174634



7820124



A3171377

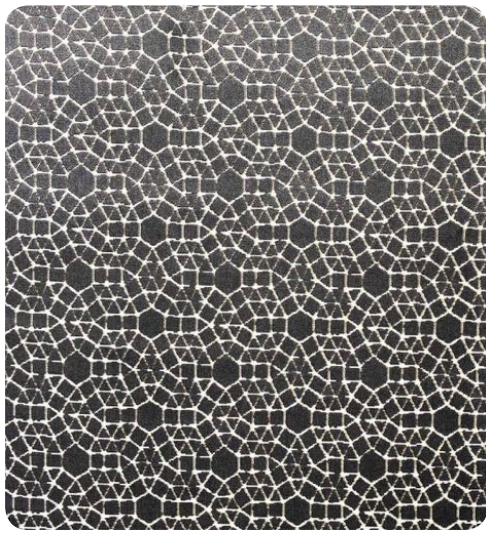


7820267



A3171123

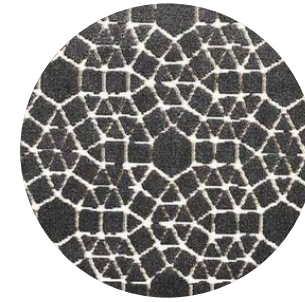
PRODOTTO product	COMPOSIZIONE composition	ALTEZZA width	RESISTENZA AL FUOCO fire resistance
Kipling 782	50%PL-50%VI	140cm	NO
Oxford A317	60%VI-20%CO-20%PL	140cm	NO



33140590

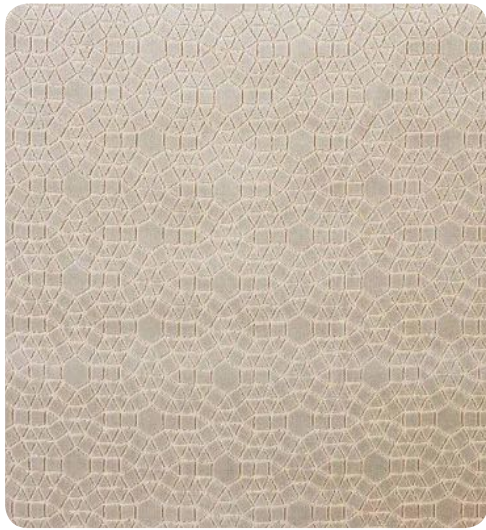


A3174328



33140590

Sedia Traforata



33140112



A3174430

PRODOTTO product	COMPOSIZIONE composition	ALTEZZA width	RESISTENZA AL FUOCO fire resistance
Baigneuses 3314	80%VI-20%PL	140cm	NO
Oxford A317	60%VI-20%CO-20%PL	140cm	NO





7820494

•
Sedia Luna



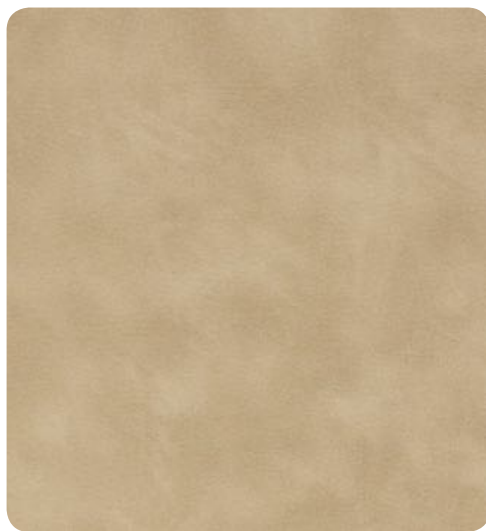
Rebel



REBEL



02



01



03



04



05



06

PRODOTTO product	COMPOSIZIONE composition	ALTEZZA width	RESISTENZA AL FUOCO fire resistance
Rebel	68%PVC-2%PU-30%PL/CO	144cm	UNI 9175 CLASSE 1 IM



04

•
Divano Giglio



Sidecar



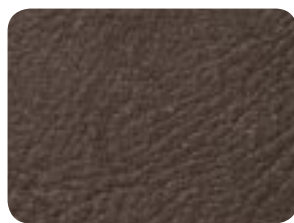
SIDECAR



12



08



15



02



01



07



04



16



13



10



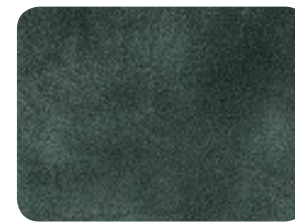
14



11



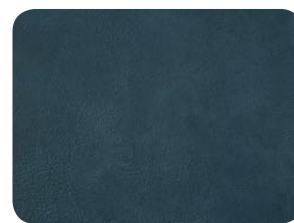
12



05



08



17

PRODOTTO product	TIPO PELLAME composition	SPESSORE thickness	TAGLIA MEDIA average size	SUPERFICIE surface
PELLAME	BOVINO	mm. 1,3-1,5	> Mq. 4,5	FIORE CORRETTO



11

•
Poltrona Antea Office



SWING



SWING



4501



4503



4502



4504



4507

PRODOTTO product	TIPO PELLAME composition	SPESSORE thickness	TAGLIA MEDIA average size	SUPERFICIE surface
PELLAME	BOVINO	mm. 0,9-1,1	> Mq. 4,8 - 5	FIORE

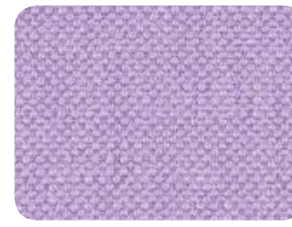


4503

•
Poltroncina Ennea



PARIS TEXAS



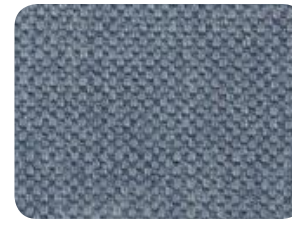
3613719



3610722



3618974



3618611



3613152



3611153



PARIS TEXAS



3619875



3610921



3613371



3615376

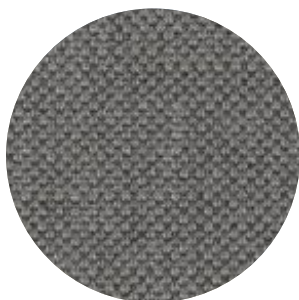


3610594



3610488

PRODOTTO product	COMPOSIZIONE composition	ALTEZZA width	RESISTENZA AL FUOCO fire resistance
Paris T. 361	63%CO-37%LI	140cm	NO



3613371

•
Nicolas Divano



Saturnia



SATURNIA



742-01



743-01



742-02



743-02



742-03



743-03

PRODOTTO product	COMPOSIZIONE composition	ALTEZZA width	RESISTENZA AL FUOCO fire resistance
PQ 742	100%PL	140cm	NO
PQ 743	100%PL	140cm	NO



742-07



743-07



742-01

Poltroncina Maeva

PRODOTTO product	COMPOSIZIONE composition	ALTEZZA width	RESISTENZA AL FUOCO fire resistance
PQ 742	100%PL	140cm	NO
PQ 743	100%PL	140cm	NO

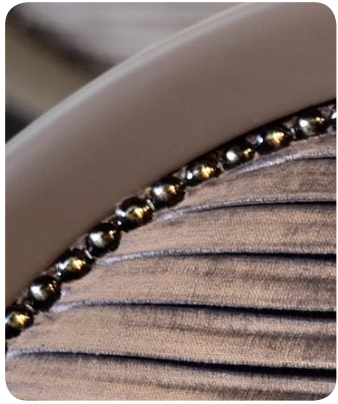




PROF. 02



PROF. 04



PROF. 05



PROF. 03



PROF. 12



PROF. 01

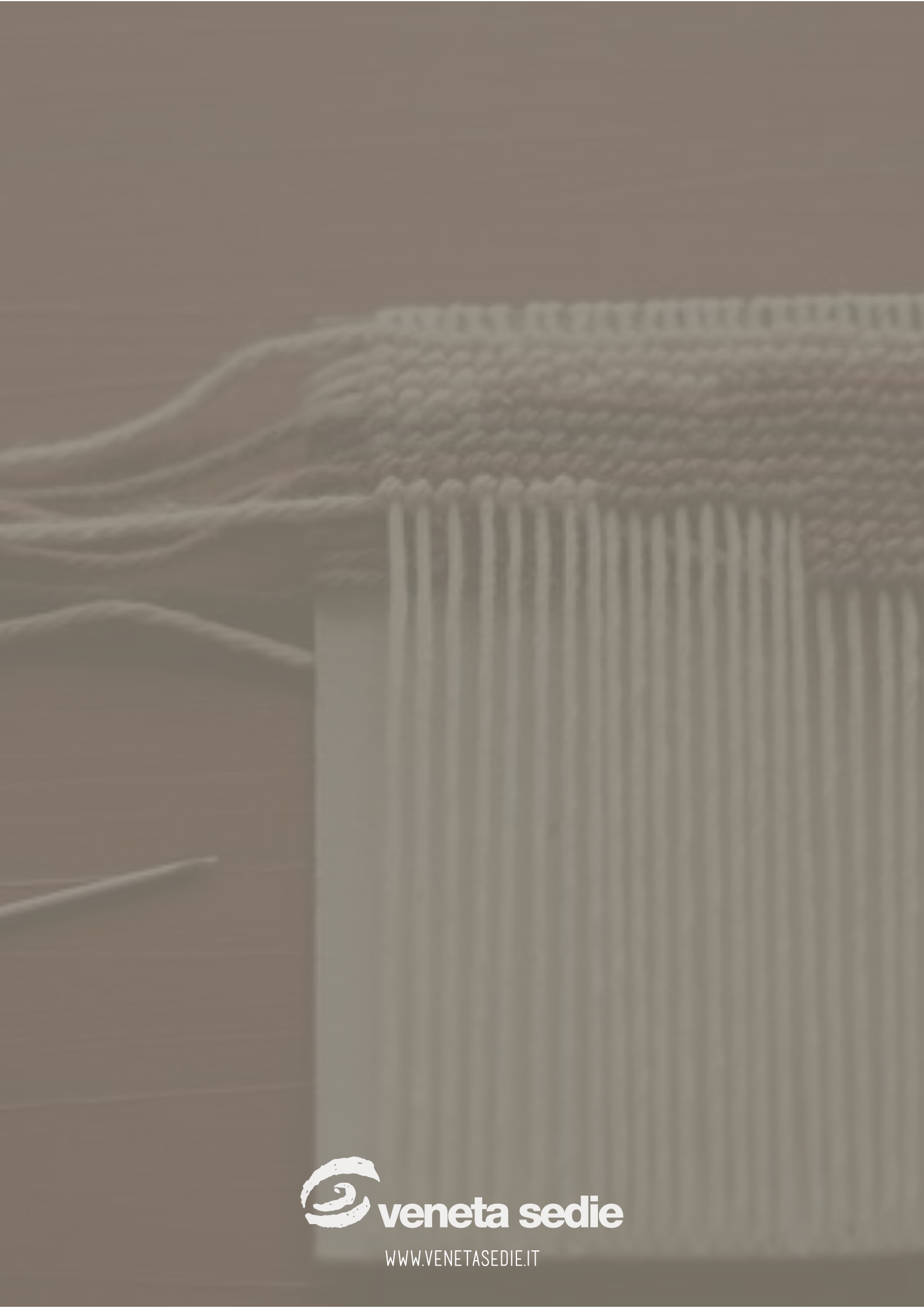
CODICE code	IT	ENG
PL	poliestere	polyester
VI	viscosa	viscose
CO	cotone	cotton
ACR	acrilica	acrylic
PU	poliuretana	polyurethane
PVC	polivinilcloruro	polyvinylchloride
PES	poliestere	polyester
LI	lino	linen
LX	lurex	lurex
PA	poliammide	polyamide
WO	lana	wool
PC	acrilica	acrylic
EMBROIDERY	ricamo	embroidery
OTHER	altre fibre	other fibers

Il presente catalogo ha carattere illustrativo. Venetasedie Trading Srl declina ogni responsabilità per eventuali non conformità di colori delle finiture dei materiali utilizzati.

© È vietata la riproduzione, anche parziale, delle immagini senza autorizzazione di Venetasedie Trading Srl.

This catalogue is made for illustrative purpose. Venetasedie Trading Srl declines all responsibilities for finishes of employed materials that match perfectly these samples.

© The published images cannot be printed without the authorization of Venetasedie Trading Srl.



 **veneta sedie**

WWW.VENETASEDIE.IT